



St Buryan Academy Primary School
Believe, Achieve, Aspire

Music Development Plan Summary – St Buryan Academy

Academic Year: 2024–2025

Date Published: May, 2025

Review Date: July 2026

Local Music Hub: ASONE Hub, Cornwall

Other Music Education Organisations: Charanga

Part A: Curriculum Music

Curriculum Delivery:

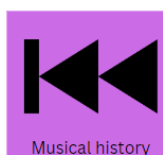
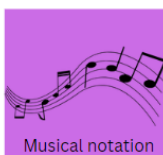
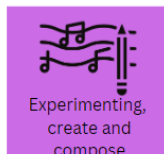
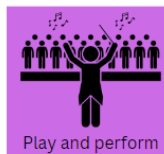
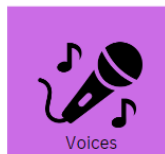
- Music is taught weekly across all year groups, following the National Curriculum. The curriculum focuses on developing skills in singing, listening, composing, and performing. Lessons are designed to build upon prior knowledge, ensuring progression throughout the school. Charanga is used to support teaching and learning as well as curriculum development.

Key Features:

- Regular singing sessions to develop vocal skills and confidence.
- Opportunities to learn and play classroom instruments.
- Encouraging creativity through composing original pieces.
- Exposure to a wide range of musical genres and cultures.
- Teaches the key concepts itemised below.

Assessment:

- Pupil progress is monitored through formative assessments, with feedback provided to support development.



Part B: Co-Curricular Music

Enrichment Opportunities:

- *Singing Assemblies* for all children.
- *Instrumental Lessons:* Access to peripatetic teachers for individual or small group lessons (subject to demand and availability).
- *School Productions:* Annual performances involving singing, acting, and instrumental music, fostering confidence and teamwork.

Community Engagement:

- The school actively participates in local events, such as village festivals and church services, showcasing pupils' musical talents and strengthening community ties.

Part C: Musical Experiences

Live Performances and Workshops:

- *Visits to Performances:* Organized trips to local concerts and musical events.
- *In-School Workshops:* Sessions with visiting musicians and ensembles to inspire and educate.

Cultural Diversity:

- The music curriculum includes exploring music from various cultures and traditions, promoting inclusivity and global awareness.

Future Plans

- *Curriculum Enhancement:* Integrate new resources and technologies to enrich music lessons.
- *Expanded Instrumental Program:* Increase access to a wider range of instruments and tuition.
- *Partnerships:* Strengthen collaborations with local music organizations and the ASONE Hub.
- *Performance Opportunities:* Organize more events for pupils to perform and share musical achievements.

This Music Development Plan aims to nurture a love for music, develop pupils' skills, and provide diverse opportunities for musical expression, aligning with St Buryan Academy's commitment to a broad and balanced education.